

#41049 Charleston Kit

Step-by-step assembly instructions

Copyright miniatures.com 2024

SUPPLIES NEEDED:

Masking tape
White glue (such as #1249 Weldbond)
Damp clean cloth
Exterior and interior finishes



GENERAL INSTRUCTIONS

- Identify and inspect all parts using the Parts List and Parts Diagram.
- Read the directions completely before beginning the project.
- If possible, have a dedicated work area so that you are not unpacking, repacking, and moving the project from place to place.
- Choose a work surface that is level, clean, dry, and protected from spills.
- Do a dry fit, using masking tape to hold parts in place, to make sure everything fits together correctly before assembling permanently.

Tips: Plan the finishes for the interior and exterior at the dry-fit stage, before final/permanent assembly. It is easier to finish the panels as flat surfaces. Disassemble and finish as desired, then reassemble using glue.

References to the orientation of the house assume that the front is street facing while the side with the piazzas (Charlestonian for balcony) is to the right and the open side is to the left.

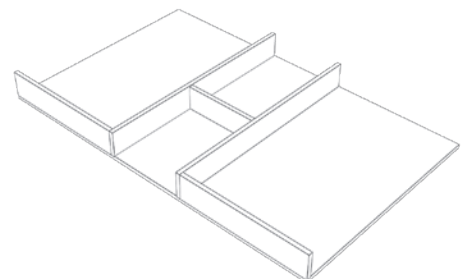
Assembly Instructions

Foundation

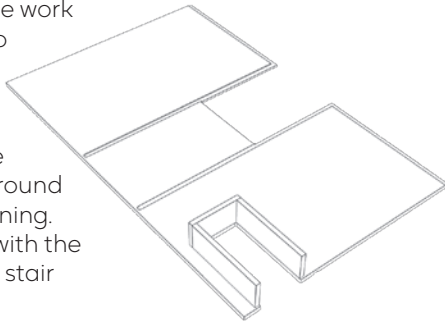
Parts you will need in this section:

- Foundation
- Middle Brace (2)
- Connecting Brace
- Left Brace (2)
- Floor 1
- Entry Side Wall (2)
- Entry Back Wall
- Entry Stair

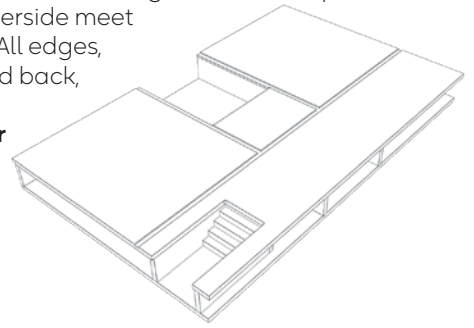
1. Place **Foundation** flat on the work surface. Orient it with the grooves facing up and the rabbet that is along the edge to the left.
2. Glue the **Middle Braces** into the long parallel grooves. They are flush at the right and left sides.
3. Glue the **Connecting Brace** into the connecting groove and between the **Middle Braces**. The **Connecting Brace** sits lower than the two **Middle Braces**.
4. Glue the **Left Braces** into the left rabbet. They are flush with the **Foundation** and butt up against the **Middle Braces**. Set this foundation assembly aside.



- Place **Floor 1** on the work surface with its two parallel grooves facing up.
- Glue both **Entry Side Walls** and the **Entry Back Wall** around the entry stair opening. All walls are flush with the three edges of the stair opening. Let Dry.



- Turn **Floor 1** over and stack it on the foundation assembly. Orient the stairwell to the front right corner. The parallel grooves on the underside meet the **Middle Braces**. All edges, except the front and back, are flush.
- Glue the **Entry Stair** into the stairwell. Its base is slightly deeper than its top step.
- Let dry.

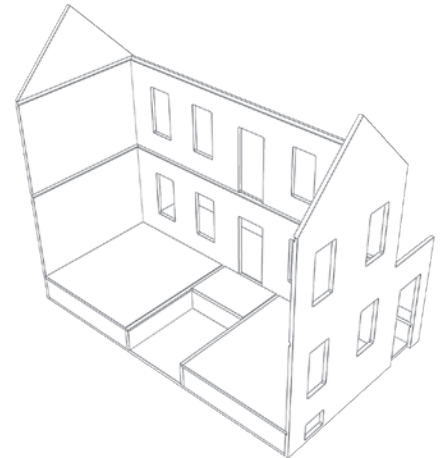


Shell

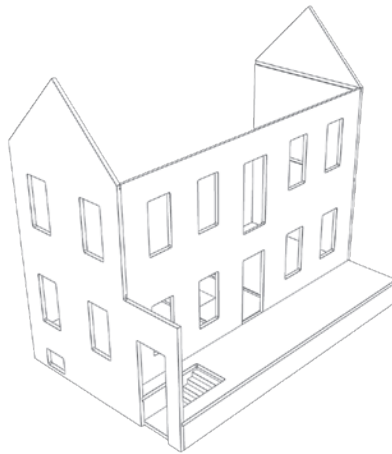
Parts you will need in this section:

- Street Wall
- Right Wall
- Back Wall
- Floor 2
- Floor 3
- Foundation Right Wall
- Foundation Back Short Wall
- Room Wall (4)
- Doorstep

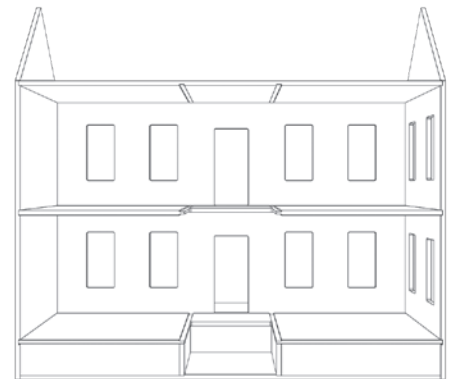
- Glue the **Street Wall** in place. Its lowest groove receives **Floor 1**. Its left and right sides are flush with **Floor 1**.
- Glue the **Right Wall** into the groove on the **Foundation** and to the **Street Wall**. The **Right Wall** butts up behind the **Street Wall**.
- Glue the **Back Wall** in place. It too receives **Floor 1** into its lowest groove. It is flush on the left side of the house.



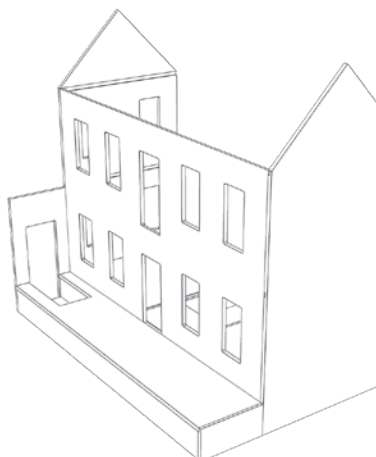
- Glue **Foundation Right Wall** to the foundation on the right of the house. It is flush with **Floor 1** and the **Street Wall**.



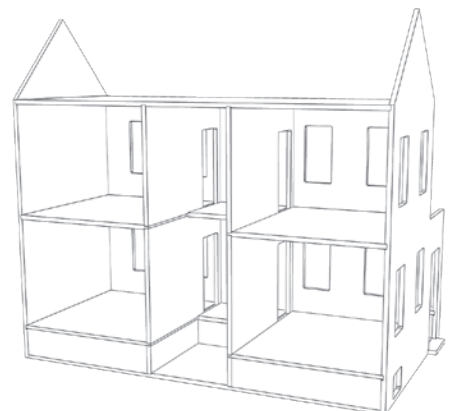
- Slide and glue **Floor 2** into the middle grooves. Orient the stairwell to the left of the house.
- Slide and glue **Floor 3** in the upper grooves. Orient the parallel grooves facing down.



- Glue **Foundation Back Short Wall** to the foundation at the back of the house. Its rabbet received **Floor 1**.
- Glue the **Doorstep** into the opening at the **Street Door**.



- Slide and glue the **Room Walls** into their corresponding grooves. Orient the door openings towards the **Right Wall**.

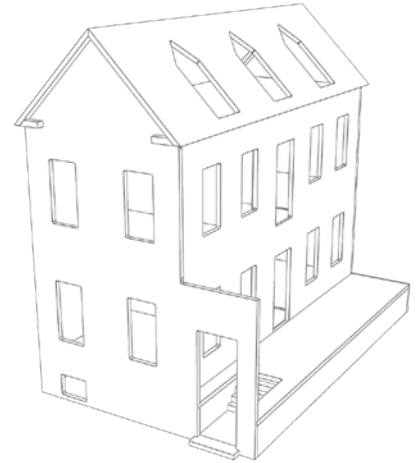


Main Roof

Parts you will need in this section:

- Left Roof
- Right Roof
- Gable Roof Trim Filler (4)

1. Place the **Left Roof** and **Right Roof** side by side with their beveled edges facing down and touching. Add tape across where the two pieces join.
2. Turn this roof assembly over and add glue to the beveled edges. Close the pieces together and stand them up like a book. Support the joint by adding tape on the sides up close to the peak. Let the glue set for a few minutes.
3. Place the roof assembly on the house. Support the roof in place with tape. Assure that the joint at the peak is tight. Let dry.
4. Remove the roof. Add glue where the walls and roof meet. Place the roof back on the house.
5. Glue all four **Trim Fillers** in place. They go under the **Roof** at the bottom tip of each gable. Their angle is flush with the angle of the gable. They are flush with the gable edge of the roof.
6. Let dry.

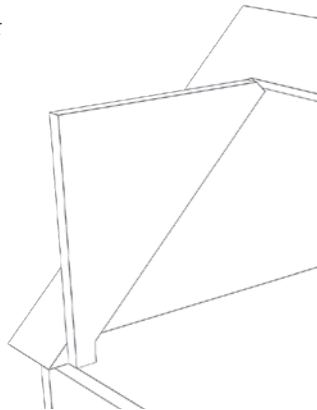


Attic

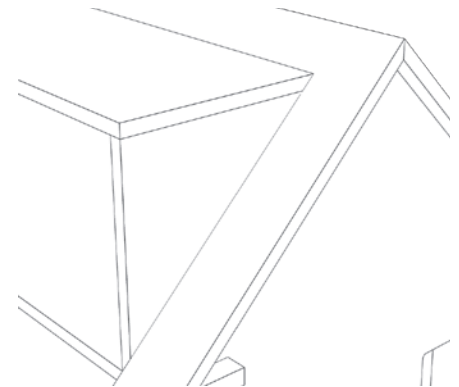
Parts you will need in this section:

- Attic Wall (2)
- Attic Roof

1. Glue both **Attic Walls** into the opening of **Left Roof**. One corner of the triangular walls is squared off. This rests on **Floor 3**. The other corner, which is angled, meets the top of the roof opening. Refer to drawing for orientation and placement.



2. Rest and glue the **Attic Roof** onto the **Attic Walls** and **Left Roof**. Its beveled edge rests against **Left Roof**. Edges are flush.

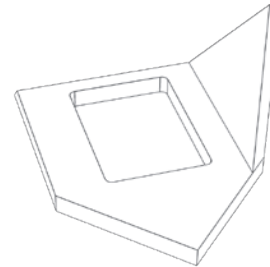


Dormers

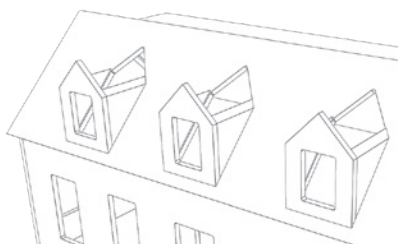
Parts you will need in this section:

- Dormer Front (3)
- Dormer Wall Left (3)
- Dormer Wall Right (3)
- Dormer Roof Left (3)
- Dormer Roof Right (3)

1. Place a **Dormer Front** on the work surface with the angled bottom edge facing up.
2. Glue **Dormer Wall Right** to **Dormer Front**. Orient the angled top edge of the wall up to match the gable.



3. Repeat Step 2 with the **Dormer Wall Left**.
4. Glue the assembly to the roof at the dormer window opening. Inside edges are flush.
5. Repeat Steps 1-4 for the remaining two dormer windows.



6. Place a **Dormer Roof Right** and **Left** with their beveled edges facing down and touching.
7. Add tape across where the two pieces join.
8. Turn this roof assembly over and add glue to the beveled edges. Close the pieces together like a book.
9. Glue the roof assembly onto the dormer assembly. Support the roof in place with tape. Assure that all joints are tight. Let dry.
10. Repeat Steps 6-9 for the remaining two dormer windows.



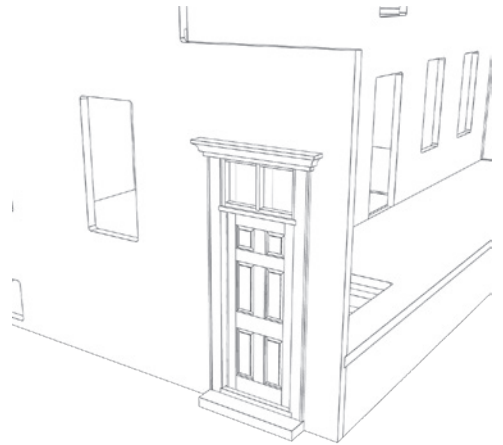
Finish exterior surfaces before continuing!

Doors

Parts you will need in this section:

- Crawlspace Door
- Interior Door (5)
- Interior Door Left Trim (5)
- Interior Door Right Trim (5)
- Interior Door Top Trim (5)
- Piazza Door (2)
- Piazza Door Left Trim (2)
- Piazza Door Right Trim (2)
- Piazza Door Top Trim (2)
- Street Door
- Street Door Left Trim
- Street Door Pane
- Street Door Right Trim
- Street Door Top Trim

1. Paint, stain, or otherwise finish all doors.
2. Assemble and finish all door trim.
3. Glue the **Crawlspace Door** into its opening on the **Street Wall**.
4. Glue the **Street Door** into its opening on the **Street Wall**. Add its pane and assembled trim to the back side.



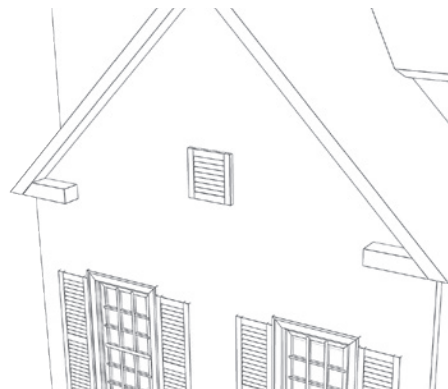
5. Glue the **Piazza Doors** into their openings on the **Right Wall**. Note that the **Piazza Door Trim, Interior Doors** and **Interior Door Trim** are added to the interior walls after the walls are decorated.
6. Doors typically swing into the space being entered.

Windows

Parts you will need in this section:

- 18-Light Window (12)
- 18-Light Window Left Trim (12)
- 18-Light Windowpane (12)
- 18-Light Window Right Trim (12)
- 6-Light Left Trim (3)
- 6-Light Right Trim (3)
- 6-Light Window (3)
- 6-Light Windowpane (3)
- Attic Vent (2)
- Crawlspace Vent
- Shutter (24)
- Windows Sill (15)
- Windows Top Trim (15)

1. Paint, stain, or otherwise finish all windows, shutters and vents.
2. Assemble and finish all window trim.
3. Glue all windows into their openings on the exterior surface of the house. Note that windowpanes and inside trim is added to the interior walls after the walls are decorated.
4. Glue all **Shutters** flush against the **18-Light Windows**.



5. Glue the **Vents** onto the **Street** and **Back Walls**. Their exact placement is by preference.

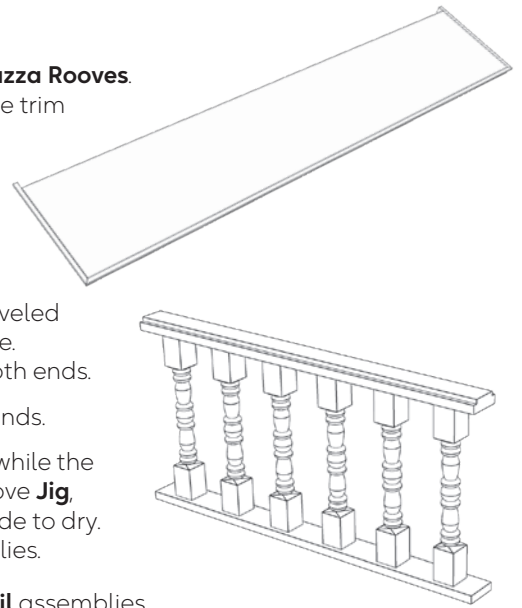
Piazas

Parts you will need in this section:

- Column (16)
- Piazza Roof (2)
- Piazza Front Trim (2)
- Piazza Right Trim (2)
- Piazza Left Trim (2)
- Piazza Side Rail Jig
- Piazza Front Rail Jig
- Balusters (81)
- Piazza Front Top Rail (9)
- Piazza Front Bottom Rail (9)
- Piazza Side Top Rail (3)
- Piazza Side Bottom Rail (3)

Assemblies

1. Glue **Front, Left and Right Trim** to both **Piazza Rooves**. The mitered ends form 90° corners. The side trim extends beyond both **Rooves**. **Set** aside.
2. Assemble **Piazza Front Rail**. The jig takes the guess work out of spacing balusters.
 - Fill the **Jig** spaces with **Balusters**. Add glue to the top end of each.
 - Place the **Top Rail** over the top ends. Beveled edge can face up or down by preference. Assure the **Rail** is flush with the **Jig** at both ends.
 - Glue the **Bottom Rail** over the bottom ends.
 - Tie elastic around both ends of the **Jig** while the glue sets for a few minutes. Gently remove **Jig**, assure assembly is square and set it aside to dry. Repeat for a total of nine **Front** assemblies.
3. Repeat Step 2 for the three **Piazza Side Rail** assemblies.

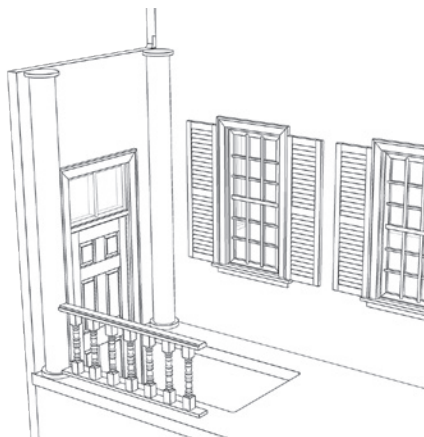


Level 1

1. Glue an column to **Floor 1** behind the **Street Door** and against the **Street** and **Right Walls**.
2. Glue another column to **Floor 1** at the left of the **Street Door**.



3. Glue a front rail assembly to this second column at the outer edge of the piazza. The rail assembly rests on top of the **Column Base** and butts against the **Column**.



4. Working towards the right, add another column assembly.
5. Continue for a total of three column and two rail assemblies being in place.
6. Add another rail assembly without gluing it. This one is for spacing only. It will be removed to provide access to the **Carriageway Steps**.
7. Glue in place three more column and two more front rail assemblies.
8. Glue a side rail assembly to the corner column and run it along the right edge of the piazza (back of the house).
9. Finish by gluing the eighth column between the side rail assembly and the **Right Wall**.



10. Glue a piazza roof assembly on to the tops of the columns and to the **Right Wall**. The **Piazza Left and Right Trim** extends onto the **Street** and **Back Walls**. Assure that the columns are standing perfectly vertical. Let dry.



Level 2

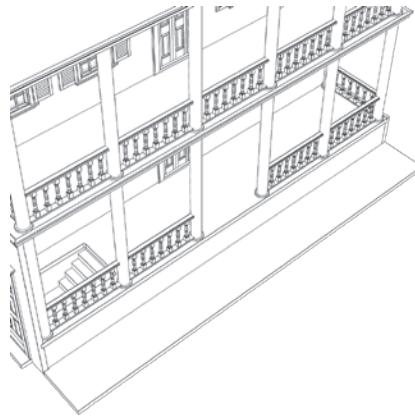
1. Build the piazza's upper level in the same way. Place the columns on the upper level directly above those on the lower level. Use a piazza side rail assembly over the **Street Door**. The piazza roof assembly fits under the **Right Roof**.



Carrigeway Stair - Steps

Parts you will need in this section:

- Carrigeway Base
- Carrigeway Floor
- Carrigeway Front
- Carrigeway Right Stair
- Carrigeway Left Stair



1. Place the **Base** against the right side of the house. Orient its corner notch to the front inside corner. The notch will be filled by trim at a later step.

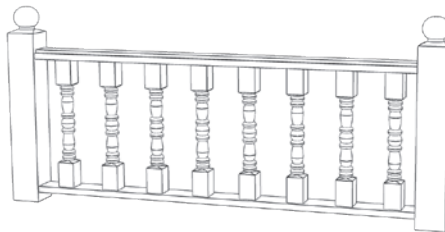


2. Glue **Floor** and **Front**.
3. Glue both **Stairs** to the front-floor assembly. Let dry.
4. Glue the stair assembly onto the **Base**. Center it in front of the **Piazza Doors**. Let dry.

Carrigeway Stair - Railing

Parts you will need in this section:

- Carrigeway Bottom Rail
- Carrigeway Top Rail
- Carrigeway Jig
- Balusters (8)
- Angled Balusters (8)
- Carrigeway Newel Post (4)
- Carrigeway Stair Rail (2)



1. Assemble the **Carrigeway Front Rail** in the same manner as for the piazzas. The jig takes the guess work out of spacing **Balusters**.
2. Glue a **Newel Posts** at either end of the rail assembly.

3. Glue the **Newel Posts** to the **Floor** centered from left to right.
4. Glue **Angled Balusters** to every step and in line with the rail assembly.
5. Glue the **Stair Rail** to the **Baluster** tops and against the top **Newel Posts**.
6. Glue a **Newel Post** against each **Stair Top Rail** and to the **Carrigeway Floor**.

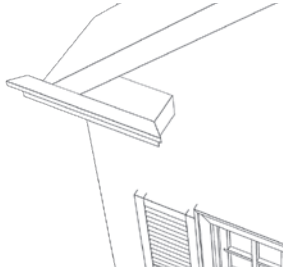


Roof Trim

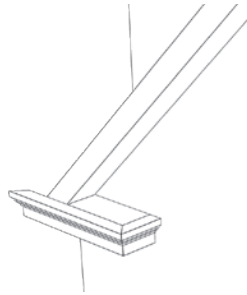
Parts you will need in this section:

- Gable Roof Trim A (4)
- Gable Roof Trim B (4)
- Attic Trim Filler (2)
- Attic Trim (2)
- Right Roof Trim Filler
- Right Roof Trim
- Large Gable Trim (4)
- Dormer Trim (6)

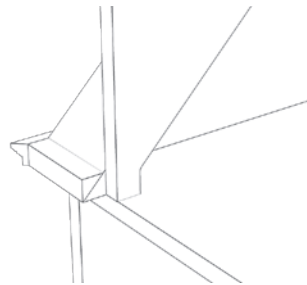
1. Glue **Gable Roof Trim A** over the **Gable Roof Trim Fillers** from the Roof section of these instructions.



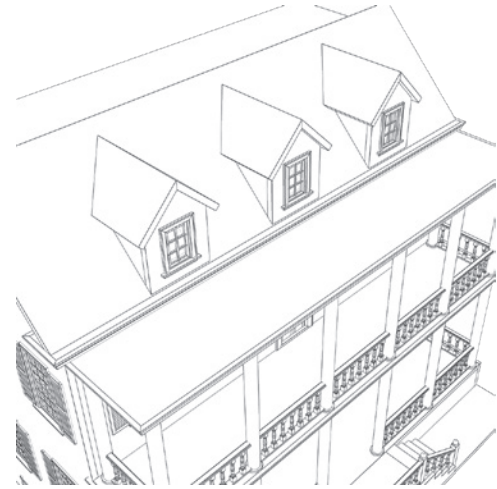
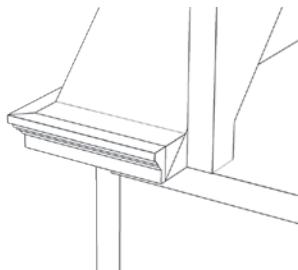
2. Glue **Gable Roof Trim B** to **A** at their mitered ends to form a 90° corner towards the inside of the gable.



3. Glue both **Attic Trim Fillers** in place. They go on the left side of the house at the outside of the **Attic Walls**. The long side of their triangular shape meets the roof.



4. Glue **Attic Trim** over the **Attic Trim Fillers**. Their mitered ends form 90° corners with the trim installed in Step 1.



5. Glue together the **Right Roof Trim Filler** and the **Right Roof Trim**. The wide flat side of the trim goes against a short side of the filler. Let the glue set.
6. Install this trim assembly on the roof line on the right side of the house. The trim rests on **Roof Right** and the **Piazza Ceiling**.



7. Glue **Large Gable Trim** in place. It goes along the gable edge of the roof.



8. Glue **Dormer Trim** in place. It goes along the front edge of the dormer rooves.

Corner Trim

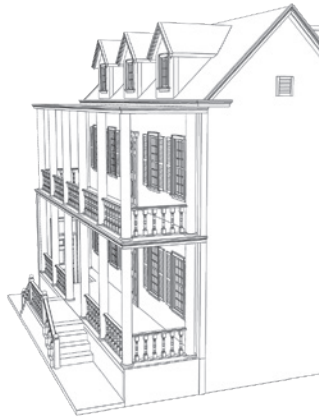
Parts you will need in this section:

- Corner Trim Long
- Corner Trim Short (3)
- Corner Trim Shortest
- Corner Trim Longest (2)

1. Add a **Corner Trim Long** to the **Street Wall**. It goes at the right of the **Street Door** and fills the notch in the **Carriageway Base**.
2. Add one **Corner Trim Short** to the **Street Wall**. It goes at the right on the second level of the piazza.



3. Add two **Corner Trim Short** to the **Back Wall**. They go at the right of the house on the first and second levels of the piazza.
4. Add **Corner Trim Shortest** to the **Back Wall**. It goes below **Corner Trim Short** to the ground.



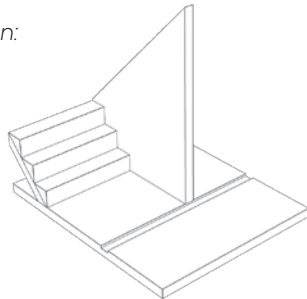
5. Add a **Corner Trim Longest** to the left side of the house at the front and back most corners.



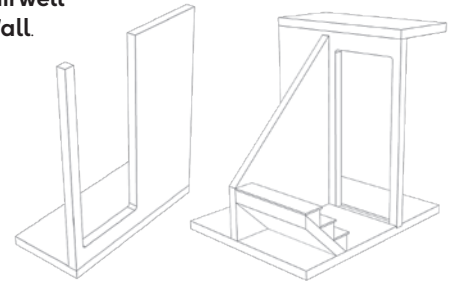
Interior Stairwell Stairs

Parts you will need in this section:

- Stairwell Floor
- Triangular Wall
- Closet Stair
- Closet Stair Treads (3)
- Closet Wall
- Landing



1. Place **Stairwell Floor** on the work surface with grooves facing up. Orient the smaller rectangle that is drawn by the grooves towards you.
2. Glue **Triangular Wall** to the **Stairwell Floor**. Orient its angled edge away from you. Put the **Closet Stair** to its left for placement.
3. Glue **Closet Stair Treads** to the **Closet Stair**.
4. Glue **Closet Stair** to **Stairwell Floor** and **Triangular Wall**.
Set aside.



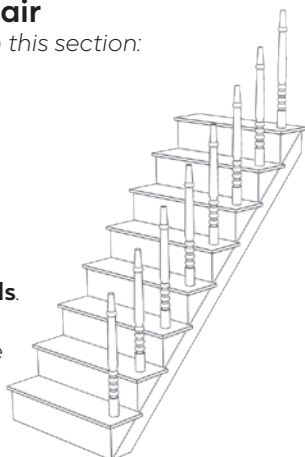
5. Glue **Landing** on top of **Closet Wall**. Refer to drawing for door orientation. Let dry.
6. Glue the landing wall assembly to the **Stairwell Floor** and **Triangular Wall**. Let dry.

Interior Long Stair

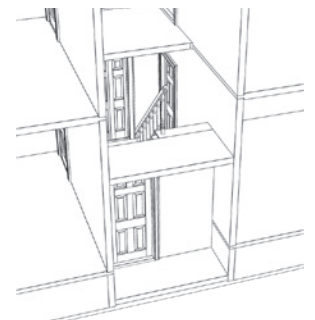
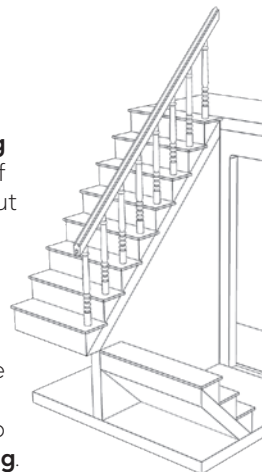
Parts you will need in this section:

- Treads (8)
- Spindle (8)
- Long Railing
- Long Stair

1. Place and glue **Spindles** into the holes in the **Treads**.
2. Glue the tread assemblies to the **Long Stair**. They overhang to the right.



3. Fit **Long Railing** over the tops of **Spindles** without gluing yet.
4. Glue long stair assembly to the top edge of **Triangular Wall**. It butts up against **Landing**.

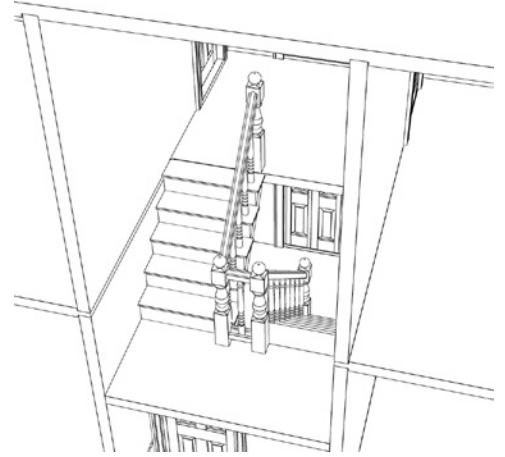
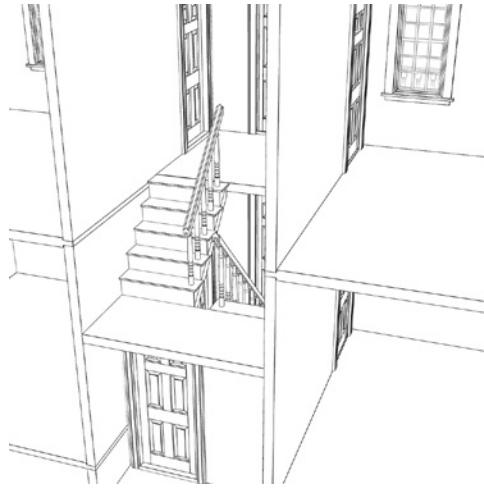


5. Slide the assembly into the house. It can be left removable or glued in place permanently.

Interior Shorter Stair

Parts you will need in this section:

- Treads (5)
- Spindle (5)
- Shorter Stair
- Shorter Railing
- Interior Newel Posts (4)



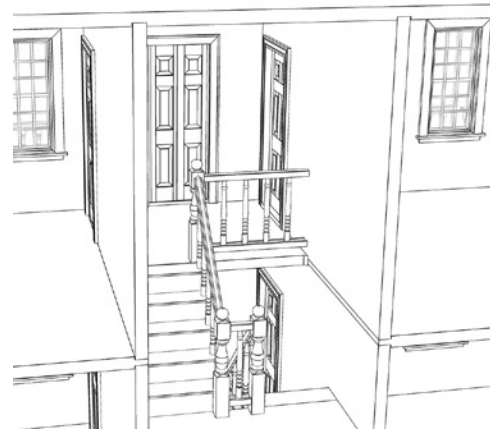
1. Place and glue **Spindles** into the holes in the **Treads**.
2. Glue the tread assemblies to the **Shorter Stair**. They overhang to the right.
3. Fit **Short Railing** over the tops of **Spindles** without gluing yet.
4. Glue **Shorter Stair** in place. It touches **Landing** and butts up against **Floor 2**.
5. Place **Newel Posts** on **Floor 1, Landing,** and **Floor 2** at each end of the **Railings**.
6. Glue **Connecting Rails** and **Spindle** between **Newel Posts** on **Landing**.
7. Glue all **Newel Posts** and **Railings** in place.
8. Let dry.

Floor 2 Railing Stairs

Parts you will need in this section:

- Floor 2 Jig
- Floor 2 Top Rail
- Floor 2 Bottom Rail
- Spindles (4)

1. Assemble the rail.
2. Assure the assembly is square and let dry.
3. Glue the assembly to the **Newel Post** at the left and to the **Room Wall** at the right.



Assembly is now complete.

Parts List

Dimensions are approximate.

Foundation

- A13** Foundation
- 3/8"W x 19 7/8"H x 32"D
- A05** (2) Middle Brace
- 3/8"W x 2 1/2"H x 19 7/8"D
- A45** Connecting Brace
- 3/8"W x 2 3/8"H x 7"D
- A47** (2) Left Brace
- 3/8"W x 2 1/2"H x 12 1/8"D
- A14** Floor 1
- 3/8"W x 20 1/4"H x 32 3/8"D
- A08** (2) Entry Side Wall
- 3/8"W x 2 1/4"H x 6 3/4"D
- A09** Entry Back Wall
- 3/8"W x 2 1/4"H x 4 3/8"D
- A81** Entry Stair
- 3/4"W x 3 1/8"H x 3 5/8"D

Shell

- A02** Street Wall
- 3/8"W x 20 1/4"H x 29 3/4"D
- A01** Right Wall
- 3/8"W x 19 7/8"H x 32 1/8"D
- A03** Back Wall
- 3/8"W x 14"H x 29 3/4"D
- A15** Floor 2
- 3/8"W x 13 3/4"H x 32 3/8"D
- A16** Floor 3
- 3/8"W x 13 3/4"H x 32 3/8"D
- A04** Foundation Right Wall
- 3/8"W x 2 5/8"H x 32 1/8"D
- A06** Foundation Back Short Wall
- 3/8"W x 3"H x 6 1/4"D
- A07** (4) Room Wall
- 3/8"W x 9 3/4"H x 13 5/8"D
- A63** Doorstep
- 3/8"W x 1 1/8"H x 4"D

Main Roof

- A19** Left Roof
- 3/8"W x 10 5/8"H x 34"D
- A18** Right Roof
- 3/8"W x 10 5/8"H x 34"D
- A22** (4) Gable Roof Trim Filler
- 1/2"W x 5/8"H x 17 1/8"D

Attic

- A48** (2) Attic Wall
- 3/8"W x 5 3/4"H x 6"D
- A50** Attic Roof
- 3/8"W x 5 7/8"H x 30"D

Dormers

- A10** (3) Dormer Front
- 3/8"W x 4"H x 5 3/4"D
- A12** (3) Dormer Wall Left
- 3/8"W x 3 5/8"H x 3 5/8"D
- A11** (3) Dormer Wall Right
- 3/8"W x 3 5/8"H x 3 5/8"D
- A20** (3) Dormer Roof Left
- 3/8"W x 3 3/4"H x 6 5/8"D
- A21** (3) Dormer Roof Right
- 3/8"W x 3 3/4"H x 6 5/8"D

Doors

- A75** Crawlspace Door
- A85** (5) Interior Door
- A86** (5) Interior Door Left Trim
- 1/4"W x 3/8"H x 7 3/8"D
- A87** (5) Interior Door Right Trim
- 1/4"W x 3/8"H x 7 3/8"D
- A88** (5) Interior Door Top Trim
- 1/4"W x 3/8"H x 3 3/4"D
- A73** (2) Piazza Door
- A90** (2) Piazza Door Left Trim
- 1/8"W x 3/8"H x 7 1/8"D
- A91** (2) Piazza Door Right Trim
- 1/8"W x 3/8"H x 7 1/8"D
- A89** (2) Piazza Door Top Trim
- 1/8"W x 3/8"H x 3 3/8"D
- A74** Street Door
- A94** Street Door Left Trim
- 1/8"W x 3/8"H x 9 1/8"D
- A92** Street Door Pane
- 1 5/8"H x 2 7/8"D
- A95** Street Door Right Trim
- 1/8"W x 3/8"H x 9 1/8"D
- A93** Street Door Top Trim
- 1/8"W x 3/8"H x 3 5/8"D

Carriageway Railing

- A112** Carriageway Bottom Rail
- 1/8"W x 3/8"H x 6"D
- A113** Carriageway Top Rail
- 1/8"W x 3/8"H x 6"D
- A110** Carriageway Jig
- 1/4"W x 2"H x 6 1/2"D
- A42** (8) Balusters
- A43** (8) Angled Balusters
- 1/4"W x 1/4"H x 2"D
- A41** (4) Carriageway Newel Post
- 3/8"W x 3/8"H x 3"D
- A44** (2) Carriageway Stair Rail
- 1/8"W x 3/8"H x 5 1/4"D

Windows

- A76** (12) 18-Light Window
 - A97** (12) 18-Light Window Left Trim
- 1/8"W x 1/4"H x 5"D
 - A100** (12) 18-Light Windowpane
- 1 7/8"H x 4 3/8"D
 - A98** (12) 18-Light Window Right Trim
- 1/8"W x 1/4"H x 5"D
 - A102** (3) 6-Light Left Trim
- 1/8"W x 1/4"H x 2 3/4"D
 - A103** (3) 6-Light Right Trim
- 1/8"W x 1/4"H x 2 3/4"D
 - A77** (3) 6-Light Window
 - A105** (3) 6-Light Windowpane
- 1 7/8"H x 2 1/4"D
 - A79** (2) Attic Vent
- 1/8"W x 1 1/2"H x 1 1/2"D
 - A78** Crawlspace Vent
- 1/8"W x 1 1/2"H x 2 7/8"D
 - A84** (24) Shutter
- 1/8"W x 1 1/4"H x 4 5/8"D
 - A96** 18-Light Window Top Trim
- 1/8"W x 1/4"H x 2 3/4"D
 - A99** 18-Light Window Sill
- 1/4"W x 1/4"H x 3 1/4"D
 - A101** 6-Light Window Top Trim
- 1/8"W x 1/4"H x 2 1/4"D
 - A104** 6-Light Window Sill
- 1/4"W x 1/4"H x 2 1/2"D
- ## Piazzas
- A83** (16) Column
- 3/4"H x 9 1/4"D
 - A17** (2) Piazza Roof
- 3/8"W x 6 1/4"H x 32 3/4"D
 - A53** (2) Piazza Front Trim
- 1/4"W x 1/2"H x 33 1/4"D
 - A52** (2) Piazza Right Trim
- 1/4"W x 1/2"H x 6 7/8"D
 - A51** (2) Piazza Left Trim
- 1/4"W x 1/2"H x 6 7/8"D
 - A109** Piazza Side Rail Jig
- 1/4"W x 2"H x 6"D
 - A108** Piazza Front Rail Jig
- 1/4"W x 2"H x 4 1/2"D
 - A42** (81) Balusters
 - A40** (3) Piazza Side Top Rail
- 1/8"W x 3/8"H x 4 1/2"D
 - A39** (3) Piazza Side Bottom Rail
- 1/8"W x 3/8"H x 4 1/2"D
 - A38** (9) Piazza Front Top Rail
- 1/8"W x 3/8"H x 5 1/2"D
 - A37** (9) Piazza Front Bottom Rail
- 1/8"W x 3/8"H x 5 1/2"D

Parts List (cont.)

Dimensions are approximate.

Carrigeway Steps

- A24** Carrigeway Base
- 3/8"W x 3 3/4"H x 32 3/4"D
- A23** Carrigeway Stair Floor
- 3/4"W x 3 1/2"H x 7 1/8"D
- A25** Carrigeway Stair Front
- 1/4"W x 2 5/8"H x 15 1/8"D
- A82** (2) Carrigeway Stair
- 2 5/8"W x 3 3/4"H x 4"D

Roof Trim

- A54** (4) Gable Roof Trim A
- 1/4"W x 1/2"H x 27 7/8"D
- A55** (2) Gable Roof
Trim B - Left
- 1/4"W x 1/2"H x 7 7/8"D
- A56** (2) Gable Roof
Trim B - Right
- 1/4"W x 1/2"H x 7 7/8"D
- A69** (2) Attic Trim Filler
- 1"W x 1"H x 4 3/8"D
- A58** Attic Trim Left
- 1/4"W x 1/2"H x 21 1/4"D
- A59** Attic Trim Right
- 1/4"W x 1/2"H x 21 1/4"D
- A68** Right Roof Trim Filler
- 1"W x 1"H x 34"D
- A57** Right Roof Trim
- 1/4"W x 1/2"H x 34 1/2"D
- A60** (4) Large Gable Trim
- 1/4"W x 1/2"H x 10 1/8"D
- A61** (3) Dormer Trim Left
- 1/4"W x 1/2"H x 37 7/8"D
- A62** (3) Dormer Trim Right
- 1/4"W x 1/2"H x 37 7/8"D

Corner Trim

- A65** Corner Trim Long
- 1/2"W x 1/2"H x 12 3/8"D
- A64** (3) Corner Trim Short
- 1/2"W x 1/2"H x 9 3/8"D
- A66** Corner Trim Shortest
- 1/8"W x 1/2"H x 3"D
- A67** (2) Corner Trim Longest
- 1/2"W x 1/2"H x 22 3/4"D

Interior Stairwell

- A49** Stairwell Floor
- 3/8"W x 7"H x 8 5/8"D
- A111** Triangular Wall
- 3/8"W x 5 1/2"H x 7 3/4"D
- A80** Closet Stair
- 7/8"W x 3 1/8"H x 37 7/8"D
- A70** (3) Closet Stair Treads
- 1/8"W x 7/8"H x 37 7/8"D
- A46** Closet Wall
- 3/8"W x 6 7/8"H x 8"D
- A27** Landing
- 3/8"W x 3 1/4"H x 7"D

Long Stair

- A26** (8) Treads
- A30** (8) Spindle
- A31** Long Railing
- 1/4"W x 1/4"H x 8 3/4"D
- A72** Long Stair
- 7/8"W x 3 1/8"H x 7 3/4"D

Shorter Stair

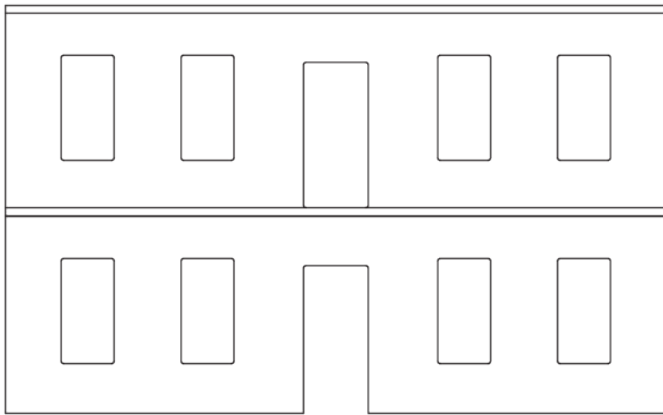
- A26** (5) Treads
- A30** (6) Spindle
- A71** Shorter Stair
- 7/8"W x 3 1/8"H x 6 3/4"D
- A32** Shorter Railing
- 1/4"W x 1/4"H x 5 1/2"D
- A28** (2) Upper Interior
Newel Post
- A29** (2) Lower Interior
Newel Post (Notch)
- 3/8"W x 3/8"H x 37 7/8"D
- A34** Connecting Rail Top
- 1/4"W x 1/4"H x 3/4"D
- A33** Connecting Rail Bottom
- 1/4"W x 1/4"H x 3/4"D

Floor 2 Railing

- A107** Floor 2 Jig
- 1/4"W x 2 3/8"H x 37 7/8"D
- A36** Floor 2 Top Rail
- 1/4"W x 1/4"H x 37 7/8"D
- A35** Floor 2 Bottom Rail
- 1/4"W x 3/8"H x 37 7/8"D
- A30** (4) Spindle

Parts Diagram

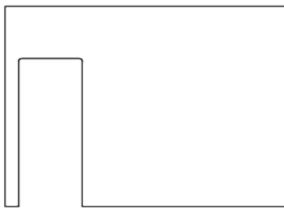
Note: Not to scale



A01 Right Wall



A05 Middle Brace



A07 Room Wall



A08 Entry Side Wall



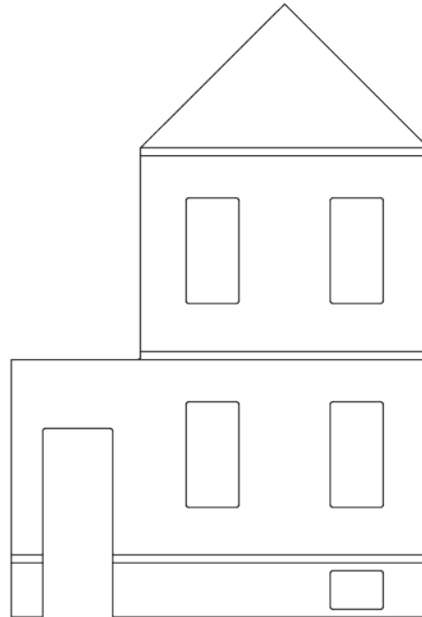
A09 Entry Back Wall



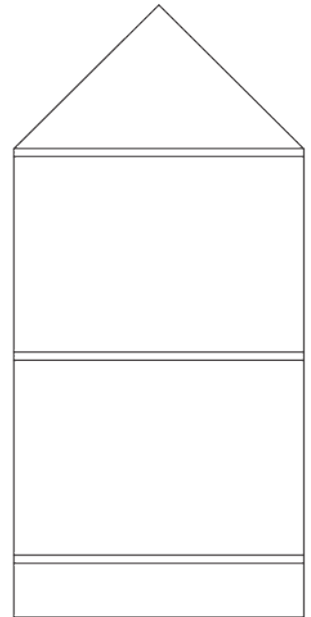
A06 Foundation Back Short Wall



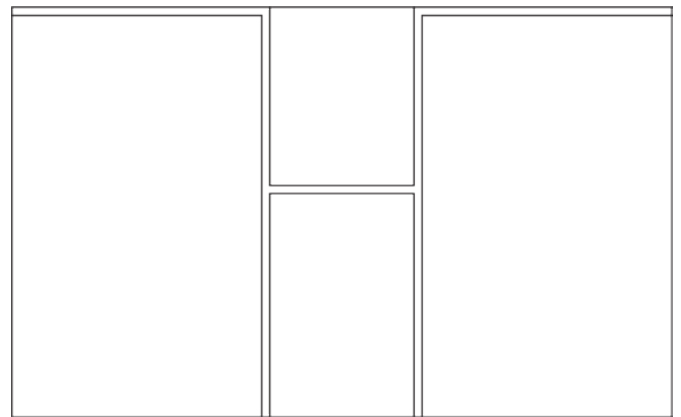
A04 Foundation Right Wall



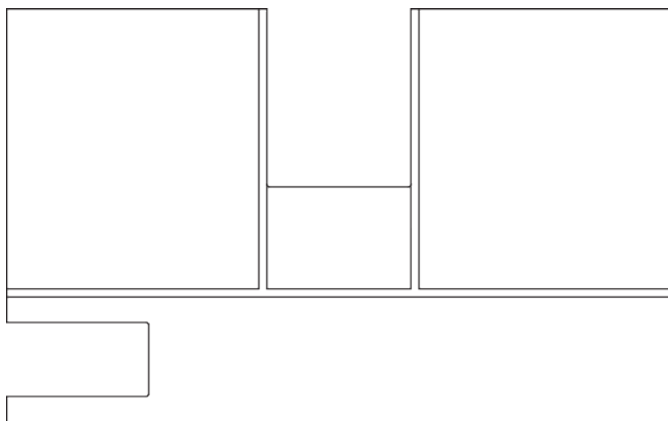
A02 Street Wall



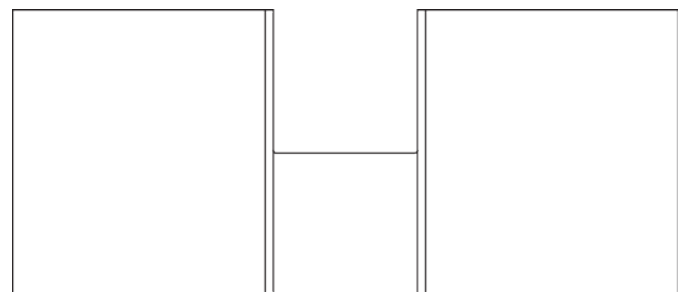
A03 Back Wall



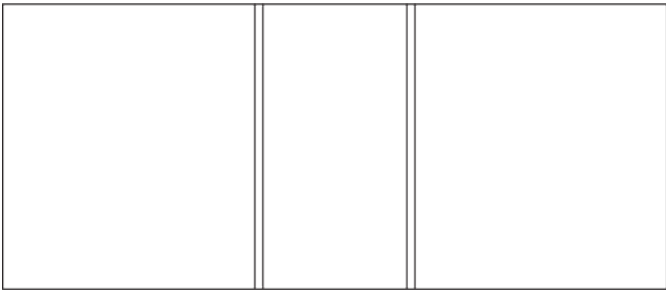
A13 Foundation



A14 Floor 1



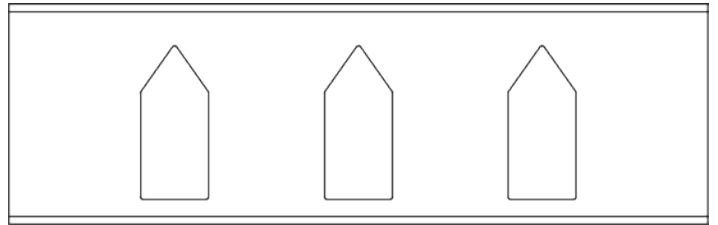
A15 Floor 2



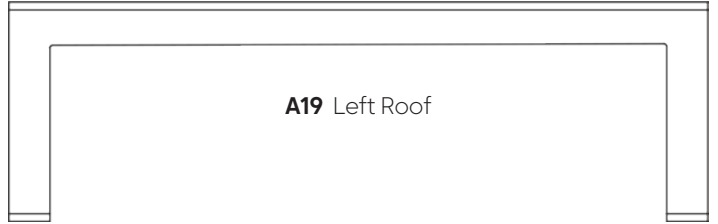
A16 Floor 3



A17 Piazza Roof



A18 Right Roof



A19 Left Roof



A12 Dormer Wall Left



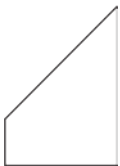
A10 Dormer Front



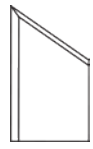
A11 Dormer Wall Right



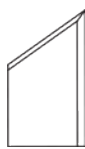
A50 Attic Roof



A111 Triangular Wall



A20 Dormer Roof Left



A21 Dormer Roof Right



A23 Carriageway Stair Floor



A25 Carriageway Stair Front



A24 Carriageway Base



A107 Floor 2 Jig



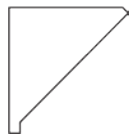
A108 Piazza Front Rail Jig



A45 Connecting Brace



A47 Left Brace



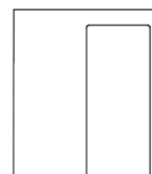
A48 Attic Wall



A109 Piazza Side Rail Jig



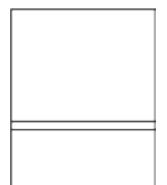
A110 Carriageway Jig



A46 Closet Wall



A27 Landing



A49 Stairwell Floor



A93 Street Door Top Trim




A88 Interior Door Top Trim



A89 Piazza Door Top Trim



A96 18-Light Window Top Trim



A101 6-Light Window Top Trim



A94 Street Door Left Trim



A86 Interior Door Left Trim



A90 Piazza Door Left Trim



A97 18-Light Window Left Trim



A102 6-Light Window Left Trim



A99 18-Light Window Sill



A104 6-Light Window Sill



A95 Street Door Right Trim



A87 Interior Door Right Trim



A91 Piazza Door Right Trim



A98 18-Light Window Right Trim



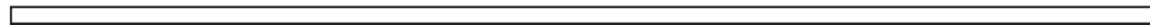
A103 6-Light Window Right Trim



A61 Dormer Trim Left



A62 Dormer Trim Right



A68 Right Roof Trim Filler



A67 Corner Trim Longest



A65 Corner Trim Long



A60 Large Gable Trim



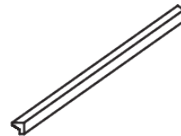
A64 Corner Trim Short



A66 Corner Trim Shortest



A69 Attic Trim Filler



A51 Piazza Left Trim



A59 Attic Trim Right



A55 Gable Roof Trim B - Left



A54 Gable Roof Trim A



A52 Piazza Right Trim



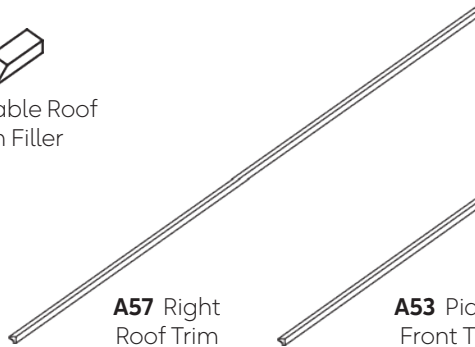
A58 Attic Trim Left



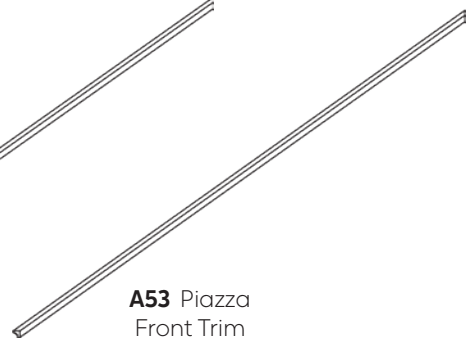
A56 Gable Roof Trim B - Right



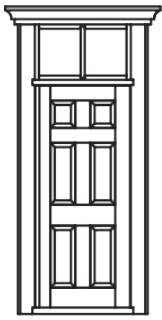
A22 Gable Roof Trim Filler



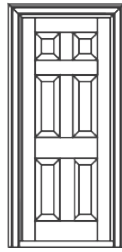
A57 Right Roof Trim



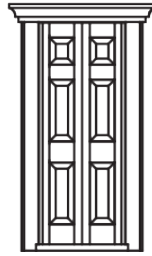
A53 Piazza Front Trim



A74 Street Door



A85 Interior Door



A73 Piazza Door



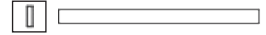
A76 18-Light Window



A31 Long Railing



A113 Carriageway Top Rail



A112 Carriageway Bottom Rail



A37 Piazza Front Bottom Rail



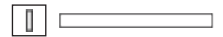
A38 Piazza Front Top Rail



A44 Carriageway Stair Rail



A32 Shorter Railing



A39 Piazza Side Bottom Rail



A40 Piazza Side Top Rail



A35 Floor 2 Bottom Rail



A36 Floor 2 Top Rail



A33 Connecting Rail Bottom



A34 Connecting Rail Top



A75 Crawlspace Door



A78 Crawlspace Vent



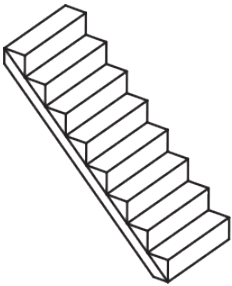
A79 Attic Vent



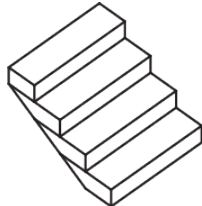
A77 6-Light Window



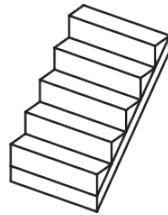
A84 Shutter



A72 Long Stair



A82 Carriageway Stair



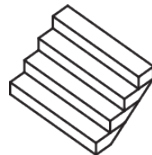
A71 Shorter Stair



A63 Doorstep



A80 Closet Stair



A81 Entry Stair



A28 Upper Interior Newel Post



A29 Lower Interior Newel Post (Notch)



A41 Carriageway Newel Post



A30 Spindle



A42 Balusters



A43 Angled Balusters



A83 Column



A70 Closet Stair Treads



A26 Treads



We hope you enjoy your Charleston Dollhouse kit!
For finishing tips and more information, visit miniatures.com.

We would love to see how yours turns out; please send pictures to support@miniatures.com.

Questions? Contact us at support@miniatures.com or call 1-800-926-6464 (Mon-Fri 10:00 AM-5:00 PM ET).